

- LEGEND**
- CONCRETE MONUMENT
 - SEWER FORCE MAIN
 - GRAVITY SEWER
 - PATERNS
 - FIRE HYDRANT
 - GRASSABLE & UTILITY EASEMENT
 - UTILITY/LANDSCAPE, FENCE EASEMENT
 - LANDSCAPE & FENCE EASEMENT
 - UTILITY EASEMENT
 - RAIL EASEMENT INCLUDES WITH LANDSCAPE EASEMENT



SCALE 1" = 100'

NOTE:
 THIS SHEET IS THE FINAL PLAT FOR THE SUBDIVISION AND SHALL BE RECORDED IN THE PUBLIC RECORDS OF THE COUNTY OF BRENTWOOD, TENNESSEE.

SELLER
 68-123
 68-124

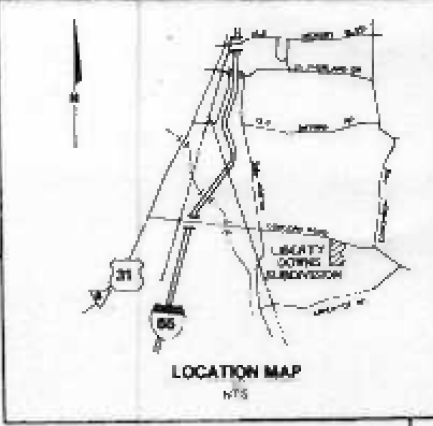
BUYER
 68-125
 68-126



CURVE DATA

STATIONING	PC	PT	LC	PT	PC
1+00	1+00.00	1+00.00	1+00.00	1+00.00	1+00.00
1+05	1+05.00	1+05.00	1+05.00	1+05.00	1+05.00
1+10	1+10.00	1+10.00	1+10.00	1+10.00	1+10.00
1+15	1+15.00	1+15.00	1+15.00	1+15.00	1+15.00
1+20	1+20.00	1+20.00	1+20.00	1+20.00	1+20.00
1+25	1+25.00	1+25.00	1+25.00	1+25.00	1+25.00
1+30	1+30.00	1+30.00	1+30.00	1+30.00	1+30.00
1+35	1+35.00	1+35.00	1+35.00	1+35.00	1+35.00
1+40	1+40.00	1+40.00	1+40.00	1+40.00	1+40.00
1+45	1+45.00	1+45.00	1+45.00	1+45.00	1+45.00
1+50	1+50.00	1+50.00	1+50.00	1+50.00	1+50.00
1+55	1+55.00	1+55.00	1+55.00	1+55.00	1+55.00
1+60	1+60.00	1+60.00	1+60.00	1+60.00	1+60.00
1+65	1+65.00	1+65.00	1+65.00	1+65.00	1+65.00
1+70	1+70.00	1+70.00	1+70.00	1+70.00	1+70.00
1+75	1+75.00	1+75.00	1+75.00	1+75.00	1+75.00
1+80	1+80.00	1+80.00	1+80.00	1+80.00	1+80.00
1+85	1+85.00	1+85.00	1+85.00	1+85.00	1+85.00
1+90	1+90.00	1+90.00	1+90.00	1+90.00	1+90.00
1+95	1+95.00	1+95.00	1+95.00	1+95.00	1+95.00
2+00	2+00.00	2+00.00	2+00.00	2+00.00	2+00.00
2+05	2+05.00	2+05.00	2+05.00	2+05.00	2+05.00
2+10	2+10.00	2+10.00	2+10.00	2+10.00	2+10.00
2+15	2+15.00	2+15.00	2+15.00	2+15.00	2+15.00
2+20	2+20.00	2+20.00	2+20.00	2+20.00	2+20.00
2+25	2+25.00	2+25.00	2+25.00	2+25.00	2+25.00
2+30	2+30.00	2+30.00	2+30.00	2+30.00	2+30.00
2+35	2+35.00	2+35.00	2+35.00	2+35.00	2+35.00
2+40	2+40.00	2+40.00	2+40.00	2+40.00	2+40.00
2+45	2+45.00	2+45.00	2+45.00	2+45.00	2+45.00
2+50	2+50.00	2+50.00	2+50.00	2+50.00	2+50.00
2+55	2+55.00	2+55.00	2+55.00	2+55.00	2+55.00
2+60	2+60.00	2+60.00	2+60.00	2+60.00	2+60.00
2+65	2+65.00	2+65.00	2+65.00	2+65.00	2+65.00
2+70	2+70.00	2+70.00	2+70.00	2+70.00	2+70.00
2+75	2+75.00	2+75.00	2+75.00	2+75.00	2+75.00
2+80	2+80.00	2+80.00	2+80.00	2+80.00	2+80.00
2+85	2+85.00	2+85.00	2+85.00	2+85.00	2+85.00
2+90	2+90.00	2+90.00	2+90.00	2+90.00	2+90.00
2+95	2+95.00	2+95.00	2+95.00	2+95.00	2+95.00
3+00	3+00.00	3+00.00	3+00.00	3+00.00	3+00.00
3+05	3+05.00	3+05.00	3+05.00	3+05.00	3+05.00
3+10	3+10.00	3+10.00	3+10.00	3+10.00	3+10.00
3+15	3+15.00	3+15.00	3+15.00	3+15.00	3+15.00
3+20	3+20.00	3+20.00	3+20.00	3+20.00	3+20.00
3+25	3+25.00	3+25.00	3+25.00	3+25.00	3+25.00
3+30	3+30.00	3+30.00	3+30.00	3+30.00	3+30.00
3+35	3+35.00	3+35.00	3+35.00	3+35.00	3+35.00
3+40	3+40.00	3+40.00	3+40.00	3+40.00	3+40.00
3+45	3+45.00	3+45.00	3+45.00	3+45.00	3+45.00
3+50	3+50.00	3+50.00	3+50.00	3+50.00	3+50.00
3+55	3+55.00	3+55.00	3+55.00	3+55.00	3+55.00
3+60	3+60.00	3+60.00	3+60.00	3+60.00	3+60.00
3+65	3+65.00	3+65.00	3+65.00	3+65.00	3+65.00
3+70	3+70.00	3+70.00	3+70.00	3+70.00	3+70.00
3+75	3+75.00	3+75.00	3+75.00	3+75.00	3+75.00
3+80	3+80.00	3+80.00	3+80.00	3+80.00	3+80.00
3+85	3+85.00	3+85.00	3+85.00	3+85.00	3+85.00
3+90	3+90.00	3+90.00	3+90.00	3+90.00	3+90.00
3+95	3+95.00	3+95.00	3+95.00	3+95.00	3+95.00
4+00	4+00.00	4+00.00	4+00.00	4+00.00	4+00.00
4+05	4+05.00	4+05.00	4+05.00	4+05.00	4+05.00
4+10	4+10.00	4+10.00	4+10.00	4+10.00	4+10.00
4+15	4+15.00	4+15.00	4+15.00	4+15.00	4+15.00
4+20	4+20.00	4+20.00	4+20.00	4+20.00	4+20.00
4+25	4+25.00	4+25.00	4+25.00	4+25.00	4+25.00
4+30	4+30.00	4+30.00	4+30.00	4+30.00	4+30.00
4+35	4+35.00	4+35.00	4+35.00	4+35.00	4+35.00
4+40	4+40.00	4+40.00	4+40.00	4+40.00	4+40.00
4+45	4+45.00	4+45.00	4+45.00	4+45.00	4+45.00
4+50	4+50.00	4+50.00	4+50.00	4+50.00	4+50.00
4+55	4+55.00	4+55.00	4+55.00	4+55.00	4+55.00
4+60	4+60.00	4+60.00	4+60.00	4+60.00	4+60.00
4+65	4+65.00	4+65.00	4+65.00	4+65.00	4+65.00
4+70	4+70.00	4+70.00	4+70.00	4+70.00	4+70.00
4+75	4+75.00	4+75.00	4+75.00	4+75.00	4+75.00
4+80	4+80.00	4+80.00	4+80.00	4+80.00	4+80.00
4+85	4+85.00	4+85.00	4+85.00	4+85.00	4+85.00
4+90	4+90.00	4+90.00	4+90.00	4+90.00	4+90.00
4+95	4+95.00	4+95.00	4+95.00	4+95.00	4+95.00
5+00	5+00.00	5+00.00	5+00.00	5+00.00	5+00.00
5+05	5+05.00	5+05.00	5+05.00	5+05.00	5+05.00
5+10	5+10.00	5+10.00	5+10.00	5+10.00	5+10.00
5+15	5+15.00	5+15.00	5+15.00	5+15.00	5+15.00
5+20	5+20.00	5+20.00	5+20.00	5+20.00	5+20.00
5+25	5+25.00	5+25.00	5+25.00	5+25.00	5+25.00
5+30	5+30.00	5+30.00	5+30.00	5+30.00	5+30.00
5+35	5+35.00	5+35.00	5+35.00	5+35.00	5+35.00
5+40	5+40.00	5+40.00	5+40.00	5+40.00	5+40.00
5+45	5+45.00	5+45.00	5+45.00	5+45.00	5+45.00
5+50	5+50.00	5+50.00	5+50.00	5+50.00	5+50.00
5+55	5+55.00	5+55.00	5+55.00	5+55.00	5+55.00
5+60	5+60.00	5+60.00	5+60.00	5+60.00	5+60.00
5+65	5+65.00	5+65.00	5+65.00	5+65.00	5+65.00
5+70	5+70.00	5+70.00	5+70.00	5+70.00	5+70.00
5+75	5+75.00	5+75.00	5+75.00	5+75.00	5+75.00
5+80	5+80.00	5+80.00	5+80.00	5+80.00	5+80.00
5+85	5+85.00	5+85.00	5+85.00	5+85.00	5+85.00
5+90	5+90.00	5+90.00	5+90.00	5+90.00	5+90.00
5+95	5+95.00	5+95.00	5+95.00	5+95.00	5+95.00
6+00	6+00.00	6+00.00	6+00.00	6+00.00	6+00.00
6+05	6+05.00	6+05.00	6+05.00	6+05.00	6+05.00
6+10	6+10.00	6+10.00	6+10.00	6+10.00	6+10.00
6+15	6+15.00	6+15.00	6+15.00	6+15.00	6+15.00
6+20	6+20.00	6+20.00	6+20.00	6+20.00	6+20.00
6+25	6+25.00	6+25.00	6+25.00	6+25.00	6+25.00
6+30	6+30.00	6+30.00	6+30.00	6+30.00	6+30.00
6+35	6+35.00	6+35.00	6+35.00	6+35.00	6+35.00
6+40	6+40.00	6+40.00	6+40.00	6+40.	

CURVES TO AND FROM CENTERLINE OF ROAD		CURVE DATA									
		D	R	F	LC	CO	A	R	T	LC	CO
C-1	41° 47' 00"	330.00	50.00	19.77	38.88	C-1	32° 00' 00"	130.00	100.00	68.88	456.88
C-2	29° 30' 18"	170.00	100.00	38.50	58.77	C-2	47° 30' 00"	50.74	27.33	34.88	300.00
C-3	29° 23' 00"	36.00	140.00	278.24	273.28	C-3	19° 3' 30"	171.40	330.00	41.37	340.24
C-4	29° 40' 00"	100.00	100.00	43.70	370.88	C-4	18° 00' 00"	100.79	85.00	118.87	178.40
C-5	29° 03' 18"	100.00	100.00	54.86	351.7	C-5	15° 23' 30"	108.42	85.36	121.5	130.14
C-6	29° 00' 30"	450.0	100.00	290.89	295.94	C-6	12° 00' 00"	473.77	50.00	368.87	364.2
C-7	27° 27' 00"	504.00	100.00	333.87	333.87	C-7	20° 41' 30"	734.33	80.00	1218.7	1281.7
C-8	29° 30' 00"	348.40	100.00	146.90	420.00	C-8	15° 00' 30"	1444.87	111.12	147.34	130.43
C-9	29° 00' 00"	273.88	100.00	118.60	500.00	C-9	20° 00' 00"	368.47	175.00	346.44	144.88
C-10	34° 00' 00"	858.00	457.71	609.47	780.00	C-10	38° 30' 00"	130.29	130.00	227.87	200.30



CERTIFICATE OF APPROVAL OF UTILITY SYSTEMS

I HEREBY CERTIFY THAT THE FOLLOWING UTILITY SYSTEMS OUTLINED OR LOCATED ON THE FINAL SUBDIVISION PLAN ENTITLED LIBERTY DOWNS SUBDIVISION HAVE BEEN INSTALLED ACCORDING TO CURRENT, LOCAL AND/OR STATE GOVERNMENT REQUIREMENTS.

WATER SYSTEM: 4/29/88
DATE: _____
MADE: [Signature]
APPROVED APPROVING AGENT

SEWER SYSTEM: 4/29/88
DATE: _____
MADE: [Signature]
APPROVED APPROVING AGENT

- LEGEND**
- CONCRETE MONUMENT
 - GRAVEL FORCE MAIN
 - GRAVEL SEWER
 - RAILROAD
 - 100' SETBACK
 - UNPAVED UTILITY TREATMENT
 - UTILITIES AND/OR (LAND TREATMENT)
 - LANDSCAPE TREES (2" DIA.)
 - LAND TREATMENT
 - WALL TREATMENT (INCLUDED WITH LANDSCAPE TREATMENT)

NOTE:

1. THIS SHEET ON THIS SHEET MAY BE USED ONLY IN THE CITY OF BRIGHTWOOD.

2. OWNER OF ANY EXISTING STRUCTURE SHALL BE RESPONSIBLE FOR THE LOCATION OF THE STRUCTURE AT THESE LOCATIONS BEFORE ACCESS IS ALLOWED FROM ADJACENT PROPERTIES.

3. FROM THIS SHEET, STRUCTURES SHALL BE CONSIDERED ABOVE ELEVATION 210.0 AND WITH THE FLOOR FINISH BY ITS FOUNDATION AT A MINIMUM ELEVATION OF 210.0.



CERTIFICATE OF OWNERSHIP AND DEDICATION

I, THE UNDERSIGNED, HEREBY CERTIFY THAT I AM THE OWNER OF THE PROPERTY SHOWN AND DESCRIBED HEREON AND THAT I HEREBY ACCEPT THE PLAN OF SUBDIVISION WITH ALL NECESSARY CONSENT, ESTABLISH THE BOUNDARIES, SETBACK LINES AND DISTANCES, ALL UTILITIES, EASEMENTS, RIGHTS AND OTHER DATA SHOWN TO PUBLIC OF RECORD USE AS NOTED.

DATE: 4/29/88
BY: [Signature]
OWNER: [Signature]

CERTIFICATE OF ACCURACY

I HEREBY CERTIFY THAT THE PLAN BOOK AND RECORDS REFLECTED BY THIS PLAN AND OBJECT SURVEY TO THE ACCURACY REQUIRED BY THE SPECIFICATIONS OF THE CITY OF BRIGHTWOOD PLANNING COMMISSION.

DATE: 4/29/88
BY: [Signature]
PROFESSIONAL CHARTERED SURVEYOR

CERTIFICATION OF THE APPROVAL OF STREETS

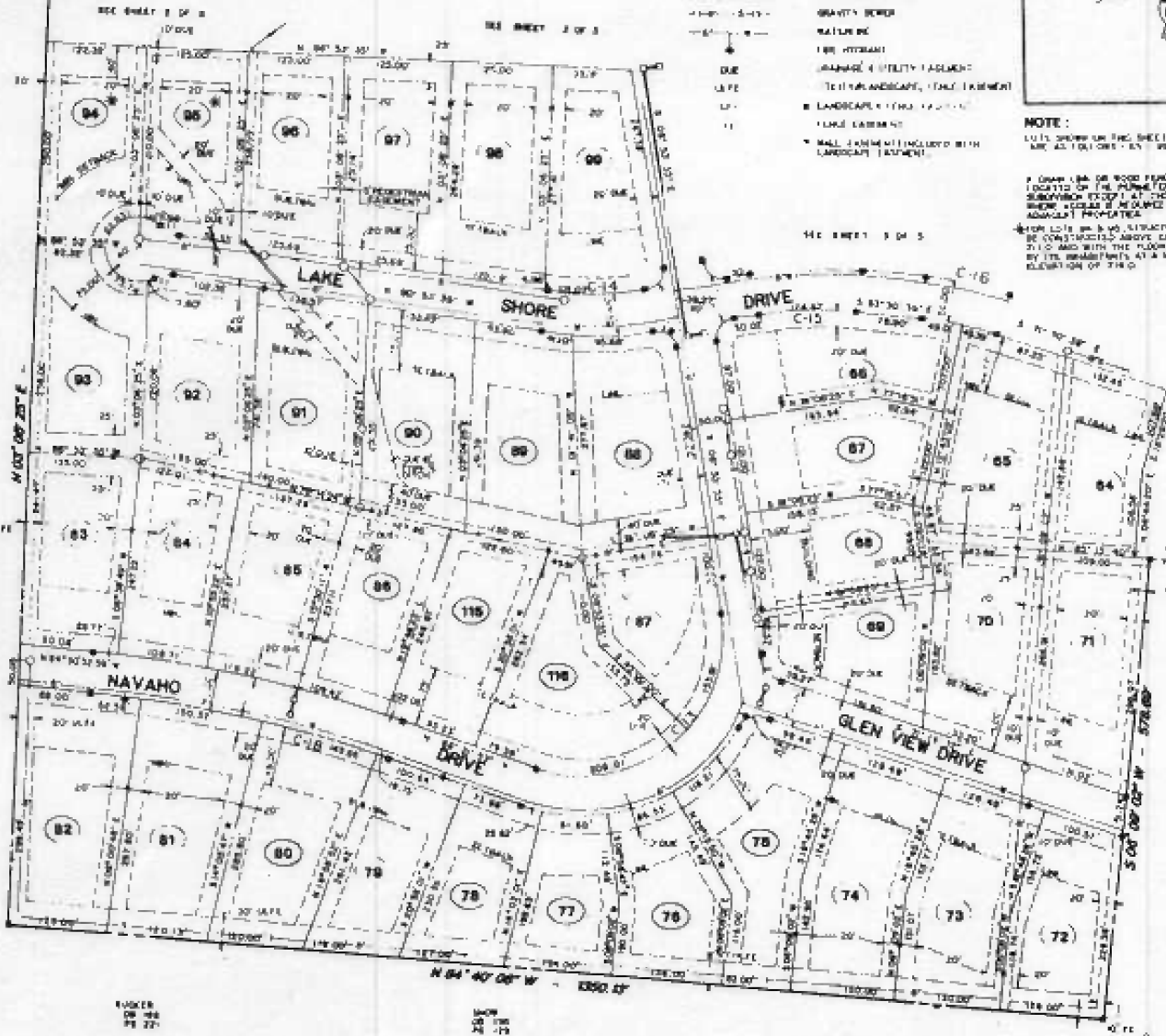
I HEREBY CERTIFY THAT ALL STREETS DEPICTED ON THE FINAL SUBDIVISION PLAN ENTITLED LIBERTY DOWNS SUBDIVISION HAVE BEEN CONSTRUCTED BY ACCORDANCE WITH CURRENT, LOCAL AND/OR STATE GOVERNMENT REQUIREMENTS.

DATE: 5/12/88
BY: [Signature]
APPROVED APPROVING AGENT

CERTIFICATE OF APPROVAL FOR RECORDING

I HEREBY CERTIFY THAT THE SUBDIVISION PLAN SHOWN HEREON HAS BEEN FOUND TO COMPLY WITH THE SUBDIVISION REGULATIONS FOR THE CITY OF BRIGHTWOOD PLANNING REGION, WITH THE EXCEPTION OF SUCH VARIANCES AS INDICATED HEREON, IF ANY, AS ARE NOTED IN THE REPORT OF THE PLANNING COMMISSION, AND THAT IT HAS BEEN APPROVED FOR RECORDING IN THE OFFICE OF THE CITY RECORDER.

DATE: _____
SECRETARY, PLANNING COMMISSION



REGISTERS' OFFICE
STATE OF TENNESSEE
WELLSBORO COUNTY

Received for record this 12/24 day of April, 1988.
Booked in Book 100, page 124
Date of Filing _____
Recorder by [Signature]
Where filed: RECORDS

RECORDERS' OFFICE

12/24 F

REVISED FINAL PLAN
LIBERTY DOWNS SUBDIVISION
BRIGHTWOOD, TENNESSEE

TOTAL ACRES: 133.44 TOTAL LOTS: 116
ADDED NEW ROAD: 12.33 FEET NEW ROAD: 114.24
CONTRIBUTED TO BRIGHTWOOD TOWN DISTRICT: 0.0
SURVEYOR: [Signature] CLOSURE NUMBER: 110000
DATE: 1 APRIL 29, 1988 SHEET 3 OF 3

SAS